




# Mapa Hidrográfico del Municipio de Guasave

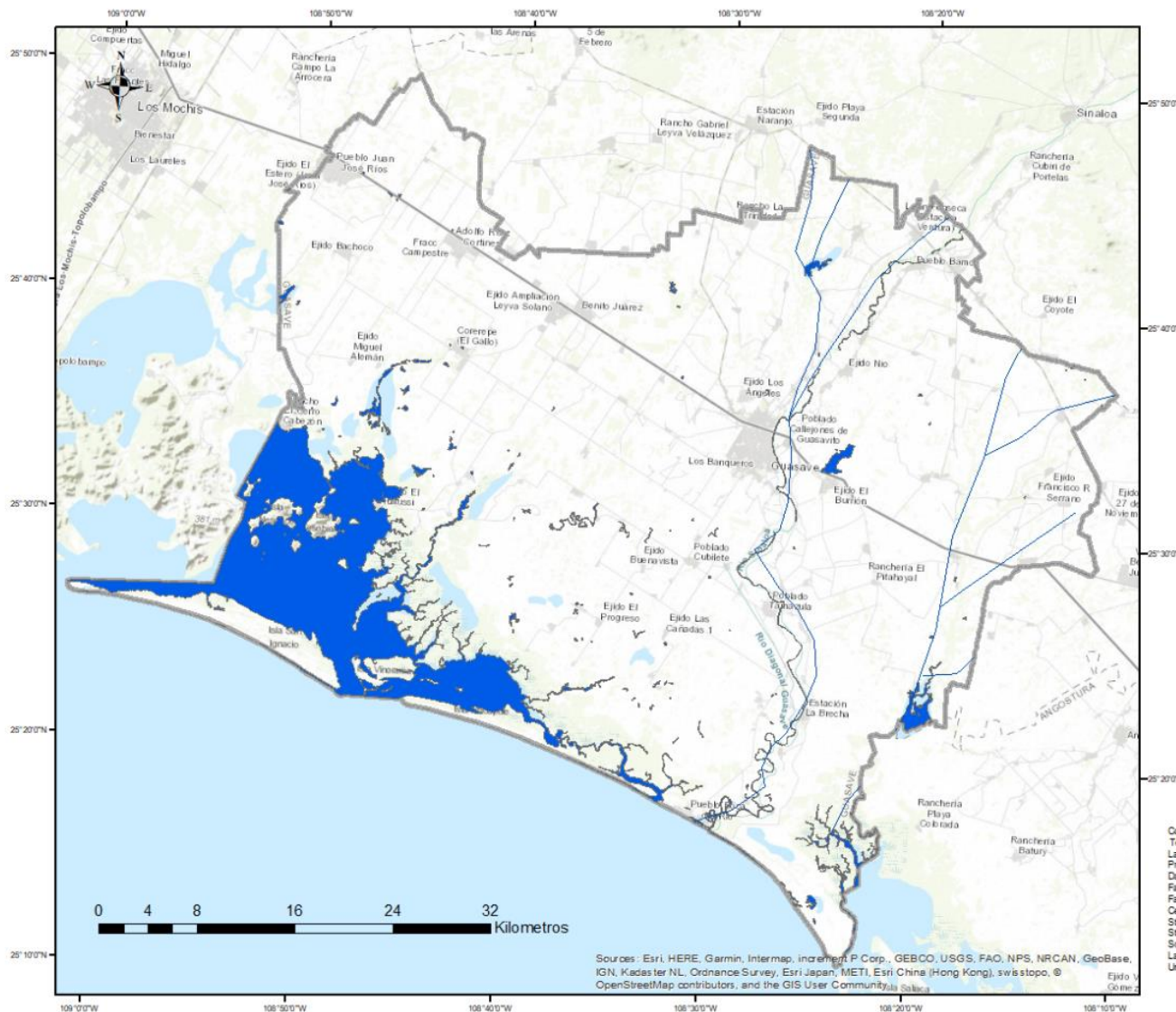
Actualización del Atlas de Riesgos del Municipio de Guasave, 2020



## Legenda

-  Limites\_municipales
-  Rios
-  Cuerpos\_de\_agua

Fuente: INEGI



Coordina System: International Terrestrial Reference Frame 1992  
 Lambert Conformal Conic 2SP  
 Projection: Lambert Conformal Conic  
 Datum: International Terrestrial Reference Frame 1992  
 False Easting: 2,500,000.0000  
 False Northing: 0.0000  
 Central Meridian: -102.0000  
 Standard Parallel 1: 17.5000  
 Standard Parallel 2: 29.5000  
 Scale Factor: 1.0000  
 Latitude Of Origin: 12.0000  
 Units: Meter



Sources: Esri, HERE, Garmin, Intermap, increment P Corp., GEBCO, USGS, FAO, NPS, NRCAN, GeoBase, IGN, Kadaster NL, Ordnance Survey, Esri Japan, METI, Esri China (Hong Kong), swisstopo, OpenStreetMap contributors, and the GIS User Community