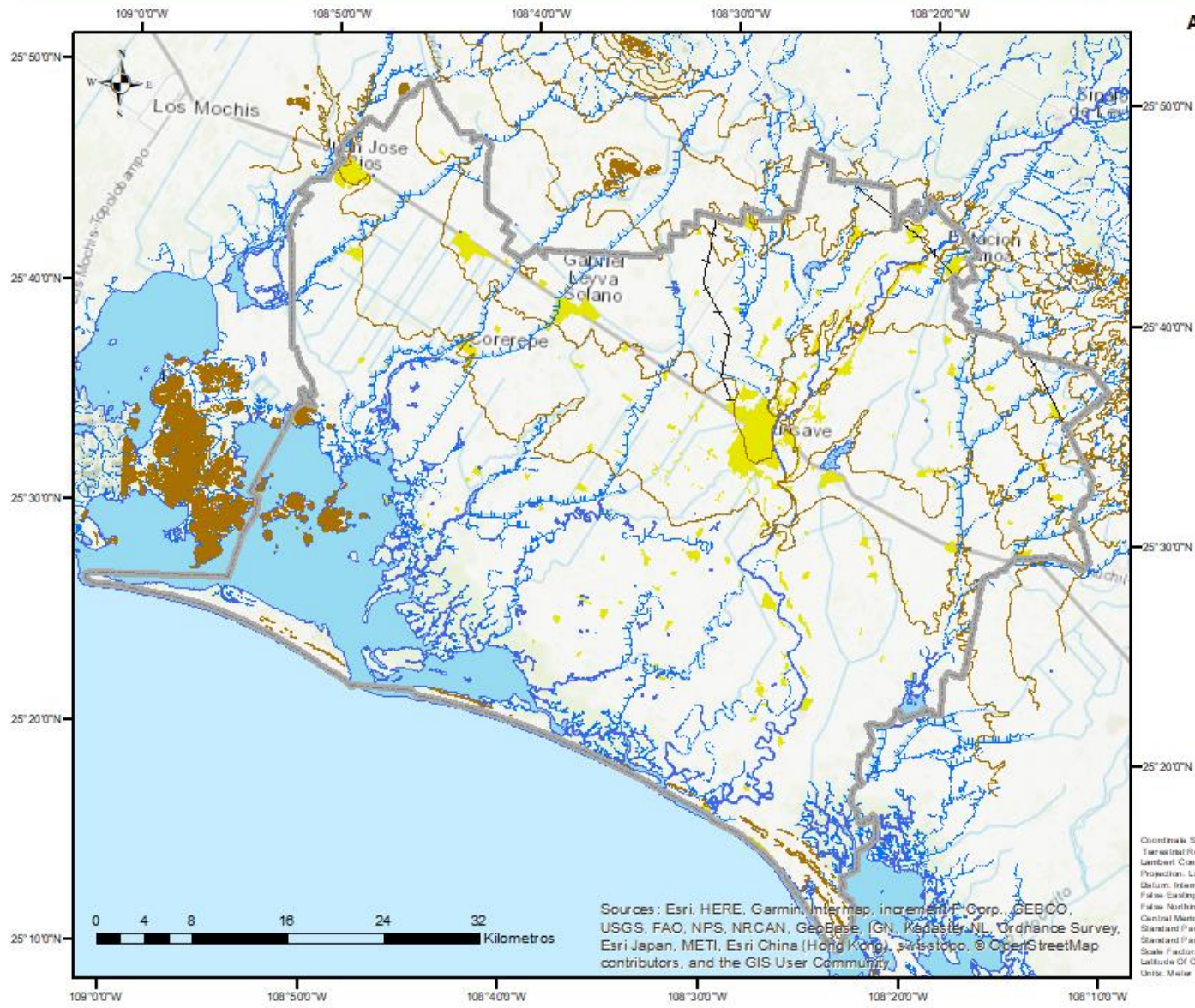


# 1.1 Mapa Base del Municipio de Guasave (Mapa Topográfico)



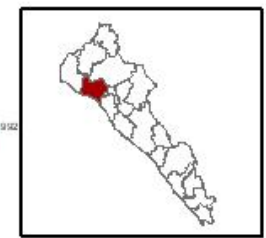
## Actualización del Atlas de Riesgos del Municipio de Guasave, 2020



**Legenda**

Limites_municipales	Intermitente
Topografia_curvas_nivel_10m	Canal
Topografia_via_ferrea	Perenne
Perenne	Intermitente
Intermitente	Canal
Canal	Perenne
Perenne	Intermitente
Intermitente	Canal
Canal	Perenne
Perenne	Intermitente
Intermitente	Canal
Canal	Perenne
Perenne	Intermitente
Perenne	Canal
Perenne	Perenne
Intermitente	Intermitente
Localidades	Localidades

Coordinate System: International  
 Terrestrial Reference Frame 1992  
 Lambert Conformal Conic: 25P  
 Projection: Lambert Conformal Conic  
 Datum: International Terrestrial Reference Frame 1992  
 False Easting: 2500000.0000  
 False Northing: 0.0000  
 Central Meridian: -102.0000  
 Standard Parallel 1: 17.5000  
 Standard Parallel 2: 29.5000  
 Scale Factor: 1.0000  
 Latitude Of Origin: 12.0000  
 Units: Meter



Sources: Esri, HERE, Garmin, Intermap, increment P Corp., GEBCO, USGS, FAO, NPS, NRCAN, GeoBase, IGN, Kadaster NL, Ordnance Survey, Esri Japan, METI, Esri China (Hong Kong), Swisstopo, © OpenStreetMap contributors, and the GIS User Community

